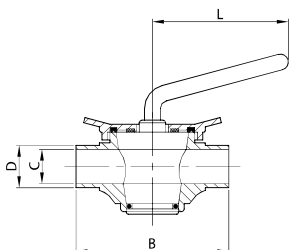




RUBINETTO 2 VIE EL.
PLUG COCK 2-WAY PE.
ROBINET 2 VOIES BL.
GRIFO 2 VÍAS EL.

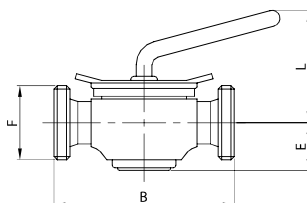
500 L



DN	B	C	D	L	gr
28	125,0	25,0	28,0	100,0	1.950
34	160,0	31,0	34,0	115,0	3.050
40	160,0	37,0	40,0	115,0	4.250
52	170,0	49,0	52,0	140,0	6.050
70	200,0	66,0	70,0	160,0	12.600
85	230,0	81,0	85,0	160,0	16.100

RUBINETTO 2 VIE EF.
PLUG COCK 2-WAY ME.
ROBINET 2 VOIES BF.
GRIFO 2 VÍAS ER.

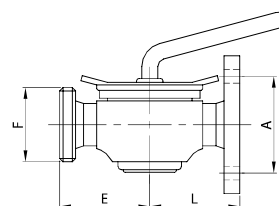
501 D



DN	B	E	F	L	gr
25	125,0	38,0	52-6	90,0	2.100
32	160,0	45,0	58-6	117,0	3.400
40	160,0	45,0	65-6	117,0	4.700
50	170,0	55,0	78-6	122,0	6.600
65	200,0	68,0	95-6	142,0	13.350
80	230,0	71,0	110-4	154,0	17.350

RUB. 2 VIE EF./FLANGIA
PLUG C. 2-WAY ME./FLANGE
ROBINET 2 VOIES BF./BRIDE
GRIFO 2 VÍAS ER./BRIDA

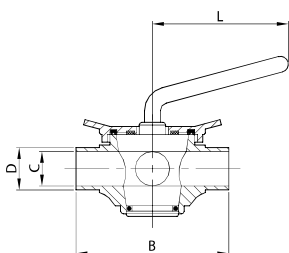
504 D



DN	A	E	F	L	gr
25	75,0	62,5	52-6	72,0	2.600
32	90,0	80,0	58-6	89,5	4.150
40	100,0	80,0	65-6	89,5	5.500
50	110,0	85,0	78-6	94,5	7.400
65	130,0	100,0	95-6	109,5	14.300
80	150,0	115,0	110-4	124,5	18.800

RUBINETTO 3 VIE EL.
PLUG COCK 3-WAY PE.
ROBINET 3 VOIES BL.
GRIFO 3 VÍAS EL.

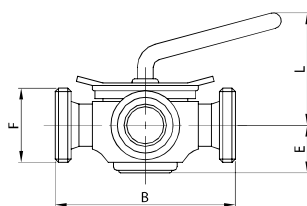
510 L



DN	B	C	D	L	gr
28	125,0	25,0	28,0	100,0	2.050
34	160,0	31,0	34,0	115,0	4.500
40	160,0	37,0	40,0	115,0	4.500
52	170,0	49,0	52,0	140,0	6.100
70	200,0	66,0	70,0	160,0	12.400
85	230,0	81,0	85,0	160,0	17.100

RUBINETTO 3 VIE EF.
PLUG COCK 3-WAY ME.
ROBINET 3 VOIES BF.
GRIFO 3 VÍAS ER.

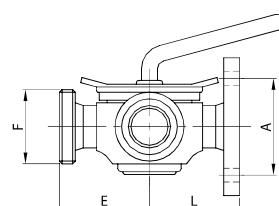
511 D



DN	B	E	F	L	gr
25	125,0	38,0	52-6	90,0	2.150
32	160,0	45,0	58-6	117,0	5.000
40	160,0	45,0	65-6	117,0	5.000
50	170,0	55,0	78-6	122,0	6.750
65	200,0	68,0	95-6	142,0	13.350
80	230,0	71,0	110-4	154,0	17.600

RUB. 3 VIE EF./EF./FL.
PLUG C. 3-WAY ME./ME./FL.
ROBINET 3 VOIES BF./BF./BR.
GRIFO 3 VÍAS ER./ER./BR.

514 D



DN	A	E	F	L	gr
25	75,0	62,5	52-6	72,0	2.650
32	90,0	80,0	58-6	89,5	6.000
40	100,0	80,0	65-6	89,5	6.100
50	110,0	85,0	78-6	94,5	7.800
65	130,0	100,0	95-6	109,5	14.700
80	150,0	115,0	110-4	124,5	19.600